

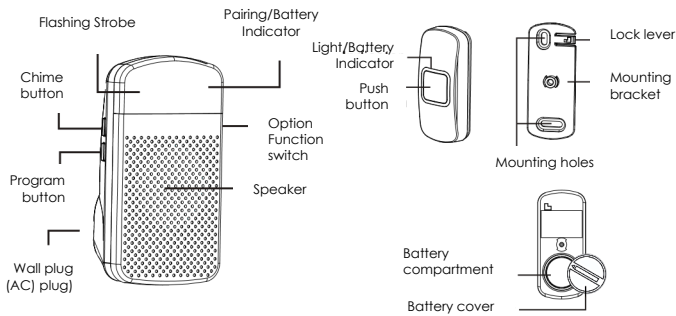
LookOut™ Sidekick & Wireless Push Button Doorbell Transmitter User Manual

(K-DBKIT360)

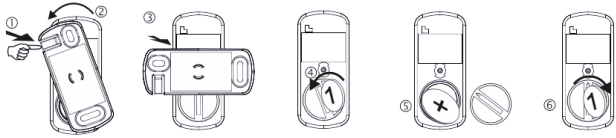
Simply mount the paired Krown Wireless Push Doorbell, plug in the Sidekick Flashing Strobe & Chime Receiver into any standard wall outlet, and it's ready to use!



PARTS & FUNCTION

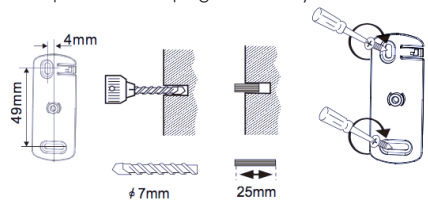


INSTALLING BATTERY & MOUNTING PLATE



1. Use your finger to unlock the lock lever.
2. Rotate the mounting bracket 90 degrees.
3. Remove the mounting bracket from the unit.
4. Using a coin, rotate the battery cover counterclockwise.
5. Insert the CR2032 battery (included) into the battery compartment.
6. Replace the battery cover and tighten using a coin.

Mounting with screws (included) (requires an electric drill for holes to fix the wall bracket with the provided ram plug and screw)



Mounting with double-sided adhesive (included)



Stick the double-sided adhesive on the mounting bracket.

Stick the bracket on the door frame.

Connect the wireless press button doorbell to the mounting bracket at 90 degrees. Rotate clockwise until it clicks into place.

THINGS TO KNOW PRIOR TO USE

- If you purchased the K-DBKIT360 LookOut™ Kit, the Sidekick and Wireless Push Button Doorbell transmitter come paired and ready for use.
- These instructions illustrate how to pair the Wireless Push Button Doorbell transmitter to the Sidekick Flashing Strobe & Chime receiver.
- For other types of transmitters, follow the same process in step #5 "PAIRING ADDITIONAL TRANSMITTERS & CHIMES SELECTION".
- Each K-KNS360ER (Sidekick) receiver can be paired with a total of two (2) wireless transmitters (such as a second doorbell or telephone).
- Once two (2) transmitters have been paired to a receiver, you cannot add additional transmitters, unless you delete a transmitter from the receiver.
- There is no limit to the number of LookOut™ Sidekick Flashing Strobe & Chime receivers you can pair with a LookOut™ transmitter.
- There are two (2) ways to mount the Wireless Push Button Doorbell transmitter; adhesive or permanent mounting (adhesive & mounting hardware included).

PRODUCT FEATURES

- Long range wireless transmission up to 1,000 ft. (direct line of sight).
- Each receiver can pair with a total of two (2) transmitters.
- Receiver has three (3) operating modes; a) chime only, b) flashing strobe only and c) chime & flashing strobe.
- Eighteen (18) available chimes to choose from selected for each programmed transmitter to distinguish the transmitter notified.
- Bright Flashing LED light has two (2) flashing patterns; a) slow & b) fast; to distinguish the transmitted notification.
- Loud and clear sound, up to 90dB.
- Operating temperature: 32F to 104F.
- Product dimensions: Sidekick Receiver: 2.5" (L) x 1.2" (W) x 4.72" (H), Wireless Push Button Transmitter: 3.48" (L) x 1.34" (W) x .73" (H)
- Product weight: .25 lbs.
- K-KNS360ER Receiver AC 80V to 240V.
- Wireless Push Button Doorbell: mounting bracket and hardware, adhesive and one (1) CR2032 battery included.
- Low battery indicator illuminates when battery in paired push button (or another transmitter) is weak and needs to be replaced.
- 1-year Manufacturer's Warranty.

PAIRING ADDITIONAL TRANSMITTERS & CHIMES

If the Sidekick receiver & Wireless Push Button Doorbell transmitter are purchased as a kit (K-DBKIT360), they come paired and ready for use.

Step 1: Insert the included battery into the Wireless Push Button Doorbell Transmitter.

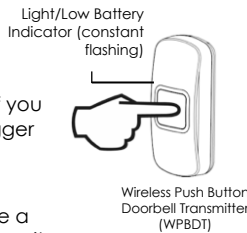
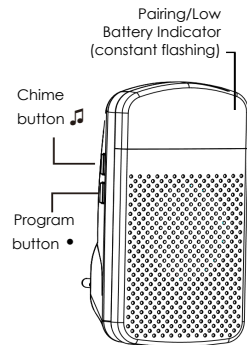
Step 2: Plug the Sidekick receiver into a standard wall outlet.

Step 3: Press and hold the • Program button for three seconds. A red LED light will blink indicating the unit is in pairing mode. If the light is solid, this means there are already two (2) Transmitters paired and you must clear the transmitters paired and you will need to clear the transmitter memory from the receiver (see instructions below).

Step 4: Press the Chime button to scroll through available chimes. Once you hear a chime you prefer, do not press any buttons the melody is set for the Wireless Push Button Doorbell Transmitter.

Step 5: Once the chime is selected, trigger the transmitter by pressing the push button. If you are pairing a different type of transmitter, trigger that transmitter by following the instructions provided for that transmitter.

Step 6: If successful, the receiver will generate a short tone. Press the Program button again to exit programming mode. The unit is now ready to use.



CHANGING THE CHIME

Step 1: Press and hold the • Program button for three (3) seconds to enter pairing mode.

Step 2: Press the • Program button to scroll between two transmitters.

Step 3: Press the Chime button until you have found your desired melody.

Step 4: Press the Wireless Push Button Doorbell to trigger the transmitter.

Step 5: Once you hear two short tones, press the • Program button to lock the melody and exit.

CLEARING TRANSMITTER MEMORY FROM RECEIVERS

The LookOut™ Sidekick receiver can pair with two (2) transmitters at a time. If you need to replace or change the type of transmitter notification, you must delete all memory from the Sidekick receiver by following the instructions below:

Step 1: Press and hold the • Program button for three (3) seconds to enter pairing mode.

Step 2: Press and hold the • Program button and Chime button together for three (3) seconds to delete the memory.

Step 3: The Sidekick receiver will generate a beep tone to indicate all transmitters in memory are now deleted.

Step 4: The pairing indicator LED will flash red to indicate a successful delete.

Step 5: You are now ready to pair a new transmitter to the Sidekick receiver.

TRANSMITTER BATTERY LOW

When the indicator lights flash constantly on the Wireless Push Button Doorbell transmitter and the Sidekick receiver after being triggered, this indicates this transmitter is battery low. Please replace the battery as soon as possible.

We are on the LookOut™ for you to expand your LookOut™ System. Follow the included instructions to program additional push buttons or transmitters to add more doors and/or more rooms.

Additional KNS360 LookOut™ Series Products:

- Krown LookOut™ All-in-One Notification System K-KNS360
- Krown LookOut™ Sidekick Receiver & Wireless Push Button Doorbell Transmitter K-DBKIT360
- Krown LookOut™ Sidekick Receiver K-KNS360ER
- Krown LookOut™ Wireless Push Button Doorbell Transmitter K-KNS360DT
- Krown LookOut™ Wireless Telephone Transmitter K-KNS360TT

IMPORTANT SAFETY INSTRUCTIONS

1. Read/keep these instructions.
2. Read all warnings.
3. Follow all instructions.
4. Do not use this device near water.
5. Clean only with a dry cloth.
6. Do not block any ventilation openings. Install in accordance with the manufacturer's instructions.
7. Do not install near any heat sources such as radiators, heat registers, stoves, or other.
9. Do not tamper with the polarized & grounding plug. Each blade of the plug has a special purpose for seamless communication & safety. A grounding type plug has two blades and a third grounding prong.
10. Only use attachments/accessories specified by the manufacturer.
11. Unplug this product during lightning storms or when unused for long periods of time.
12. This product shall not be exposed to dripping or splashing water and that no object filled with liquid such as vases shall be placed on the product. Liquid damage is not covered by warranty.
13. Mains plug is used as disconnect device and it should remain readily operable during intended use. In order to disconnect the apparatus from the mains completely, the mains plug should be disconnected from the mains socket outlet completely.
14. Caution marking is located at the bottom of device.



FCC Statement:

This equipment has been tested and found to comply with the limits for a Class B digital device, pursuant to part 15 of the FCC Rules. These limits are designed to provide reasonable protection against harmful interference in a residential installation. This equipment generates, uses and can radiate radio frequency energy and, if not installed and used in accordance with the instructions, may cause harmful interference to radio communications.

However, there is no guarantee that interference will not occur in a particular installation. If this equipment does cause harmful interference to radio or television reception, which can be determined by turning the equipment off and on, the user is encouraged to try to correct the interference by one or more of the following measures:

- Reorient or relocate the receiving antenna.
- Increase the separation between the equipment and receiver.
- Connect the equipment to an outlet on a circuit different from that to which the receiver is connected.

This device complies with part 15 of the FCC rules. Operation is subject to the following to low conditions: (1) This device may not cause harmful interference, and (2) this device may accept any interference received, including interference that may cause undesired operation.

Note: Modifications to this product will void the user's authority to operate this equipment.

Warning: To prevent fire or shock hazard. Do not expose this unit to rain or moisture.

 <p>The lightning flash with an arrowhead within a triangle alerts you to uninsulated dangerous voltage within the product's enclosure that could cause an electric shock</p>	<p>CAUTION</p> <p>RISK OF ELECTRIC SHOCK DO NOT OPEN</p> <p>TO REDUCE THE RISK OF ELECTRIC SHOCK DO NOT REMOVE COVER (OR BACK) NO USER SERVICEABLE PARTS INSIDE. REFER SERVICING TO QUALIFIED PERSONNEL.</p>	 <p>The exclamation point within a triangle alerts you to presence of important operating, maintenance and servicing instructions in this user's manual.</p>
---	--	---

The socket-outlet shall be installed near the equipment and shall be easily accessible.

